

James Marsee-Fee  
Joe Patrick-Lessee

*Copy - for P/L your files*

Property lines shown to  
surveyor and do not  
represent a survey.

Monuments taken from  
the 1952 Map.

US Forest  
Service-Fee  
Not known to  
be leased.

Scale - 1" = 400'

Frank Meadows-F  
Not known to be  
leased.

US Forest Service-Fee  
Not known to be leased.

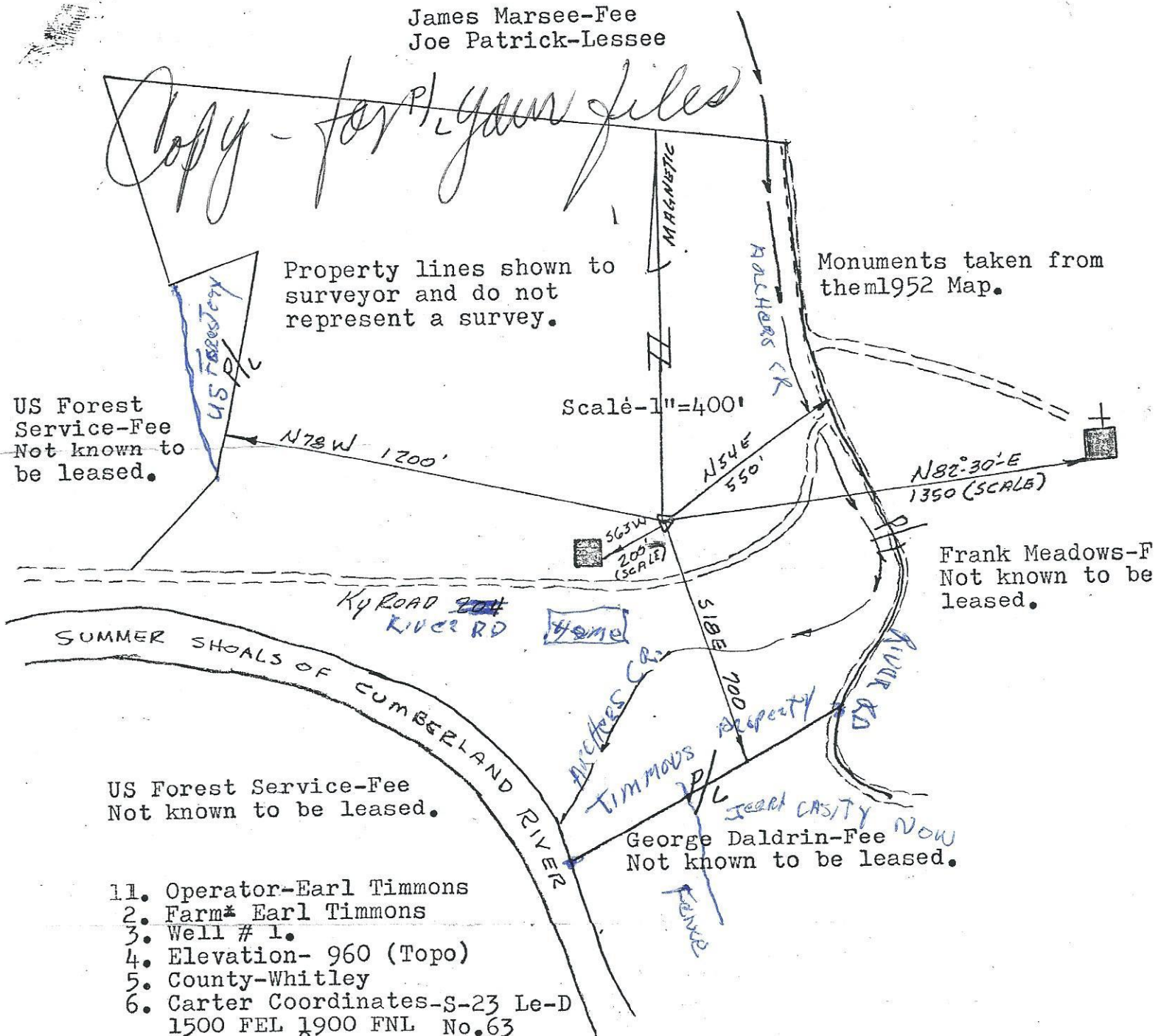
George Daldrin-Fee *NOW*  
Not known to be leased.

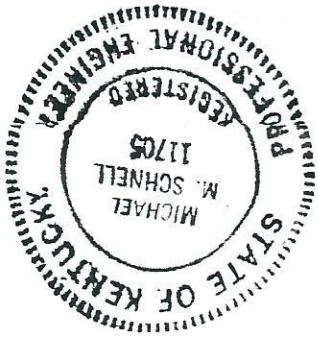
1. Operator-Earl Timmons
2. Farm\* Earl Timmons
3. Well # 1.
4. Elevation- 960 (Topo)
5. County-Whitley
6. Carter Coordinates-S-23 Le-D  
1500 FEL 1900 FNL No.63
7. Lat.-N-36°45'41"  
Long-W-84°17'18.5"
8. Cumberland Falls Quadrangle
9. Map-1952
10. Date-18 August 1985

I hereby certify that the above plat is accurate and correct  
to the best of my knowledge and belief.

*[Handwritten signature]*

*[Handwritten signature]*





Michael M. Schnell, PE  
 #11705  
 Rt. #8, Box 590  
 Williamsburg, Ky., 40769

Claude Cox, Surveyor  
 #1971  
 General Delivery  
 Nevisdale, Ky., 40754  
 (606) 549-5658

*[Handwritten signature]*

I hereby certify that the above plat is accurate and correct to the best of my knowledge and belief.

10. Date-18 August 1985

9. Map-1952

8. Cumberland Falls Quadrangle

7. Long-W-84 17.18.5"

Lat.-N-36°45.41"

1500 FFL 1900 FFL No. 63

6. Carter coordinates-S-23 Le-D

5. County-Whitley

4. Elevation-960 (Topo)

3. Well # 1.

2. Farm # Earl Timmons

1. Operator-Earl Timmons

US Forest Service-Fee  
 Not known to be leased.

George Daldain-Fee  
 Not known to be leased.

GEORGE DALDAIN  
 FEE

FRANK MEADOWS  
 FEE

FRANK MEADOWS  
 FEE

FRANK MEADOWS  
 FEE

FRANK MEADOWS  
 FEE

FRANK MEADOWS  
 FEE

FRANK MEADOWS  
 FEE

FRANK MEADOWS  
 FEE

FRANK MEADOWS  
 FEE

FRANK MEADOWS  
 FEE

FRANK MEADOWS  
 FEE

FRANK MEADOWS  
 FEE

FRANK MEADOWS  
 FEE

